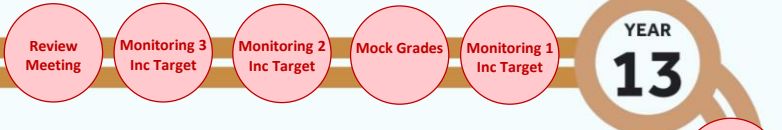


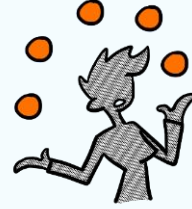


KS5 Target Grade

A Levels



YEAR 13



Monitoring 4 I & Mock Grades

YEAR 12



KS4 Target Grade

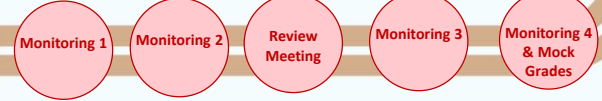
GCSEs



YEAR 11



YEAR 10



GCSEs



Y8's Pick Options

YEAR 9

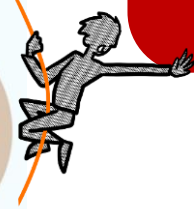


KS3 Target Grade

YEAR 8



KS3



YEAR 7



SATS

KS2 and KS1

KS2-3 Transition



Target Setting

FFT Target Setting

At Hazel Grove High School we use a Target Setting system called FFT. This takes students' KS2 Data (SATs) and compares it with national data to give students relevant target grades based on ability. However, we do select the most aspirational grade (5th percentile)

Students are given:

- KS3 Target Grade (Y8) (Foundation)
- KS4 Target Grade (Y11) (Higher)
- KS5 Target Grade (Y13) (Advance)

Hazel Grove High School

Learning Journey

Students are set a target grade when they join HGHS, this is based on SATs tests taken at Primary School. During the first term student targets are reviewed based on the outcome of CATs tests (Y 7) that all students take.

All target grades are designed to be aspirational and challenge students. From 2018-19 we now set subject specific targets. Subject staff review student targets during the 4 Monitoring periods each year.

Students Feedback

Each year group has a Subject Parents Evening and Academic Review Meeting with the Form Tutor or a Senior Member of Staff.

We also have Tutor evenings at the start of year 7 /12 to support students transition.



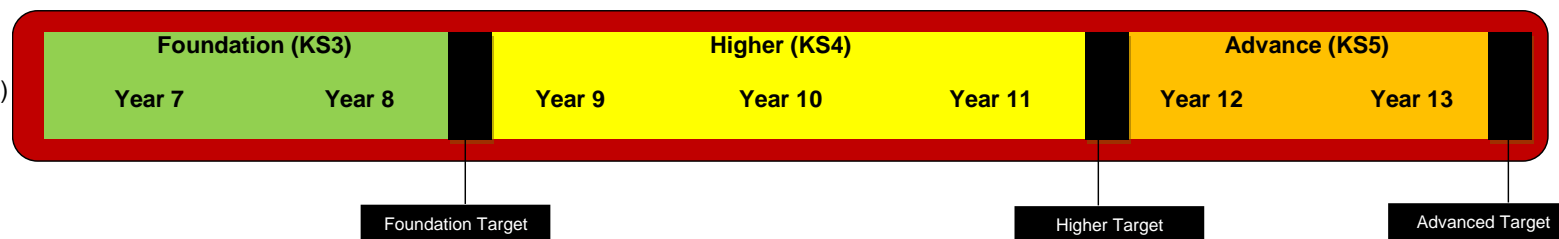
HGHS LEARNING JOURNEY 2018 - 19

Hazel Grove High School

Assessment and Reporting 2018-19

Targets are set based on the year group that the students are in

- Students in KS3 are set a foundation target (e.g. *Foundation 3*)
- Students in KS4 are set a GCSE target grade at the end of year 11 (e.g. *Higher 7*)
- Students in KS5 are set an end of year 13-target grade (e.g. *Advanced B*)



Understanding Minimum Expected Grades (MEG) at KS3 and KS4

What is an MEG?

For each subject students take they will receive a predictor produced by a nationally used piece of target setting software (FFT). The software processes the National Pupil Database for the DfE and provides data and analyses to all schools and LAs in England and Wales. The predictors are used to inform the setting of ambitious and aspirational expected grades for students.

The software database predicts the end of KS3 levels that students with the same levels at KS2 are most likely to achieve; we use this as the **Minimum Expected Grade (MEG)**. Students at Hazel Grove High School, however, often make better progress than the national average and we therefore, where students are already achieving their MEG, expect teachers to discuss with your son/daughter a **Student Aspirational Target (STG)**. The **Student Aspirational Target** will ensure they are challenged to realise their full potential.

Understanding Minimum Expected Grades at A level

What is a Minimum Expected Grade?

For each subject your son/daughter takes they will receive a predictor produced by the A-Level Information System (FFT). FFT is a target setting system that calculates subject specific predictors for A level subjects based on a student's GCSE average point score. The predictors are used to inform the setting of ambitious and aspirational targets for students.

The FFT system produces information on the percentage chance of attaining the grade compared to other students of similar ability in the national data base – the grade with the highest percentage chance, is the **Minimum Expected Grade (MEG)**. Students at Hazel Grove High School, however, make better progress than the national average and we therefore, expect teachers to discuss with your son/daughter a **Student Aspirational Target (STG)**. The **Student Aspirational Target** will ensure they are challenged to realise their full potential.

How are the Minimum Expected Grades Used?

The Minimum Expected Grades are used to help discuss student progress with: students; form tutors; teachers and parents.

